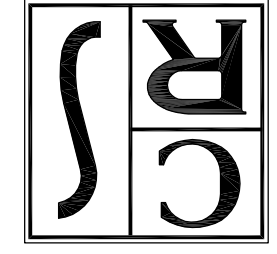


REV.	BY	DATE	DESCRIPTION
DE	5/10/06	ADDED LEGEND	
DE	5/10/06	MODIFIED CONSTRUCTION NOTE	

PROJECT MANAGER PAUL J. HIRST	CHECKER MATTHEW P. HIRST	DRAWN BY PAUL S. HATCH	SCALE 1" = 20'
DATE ISSUED 14 APRIL 2006			

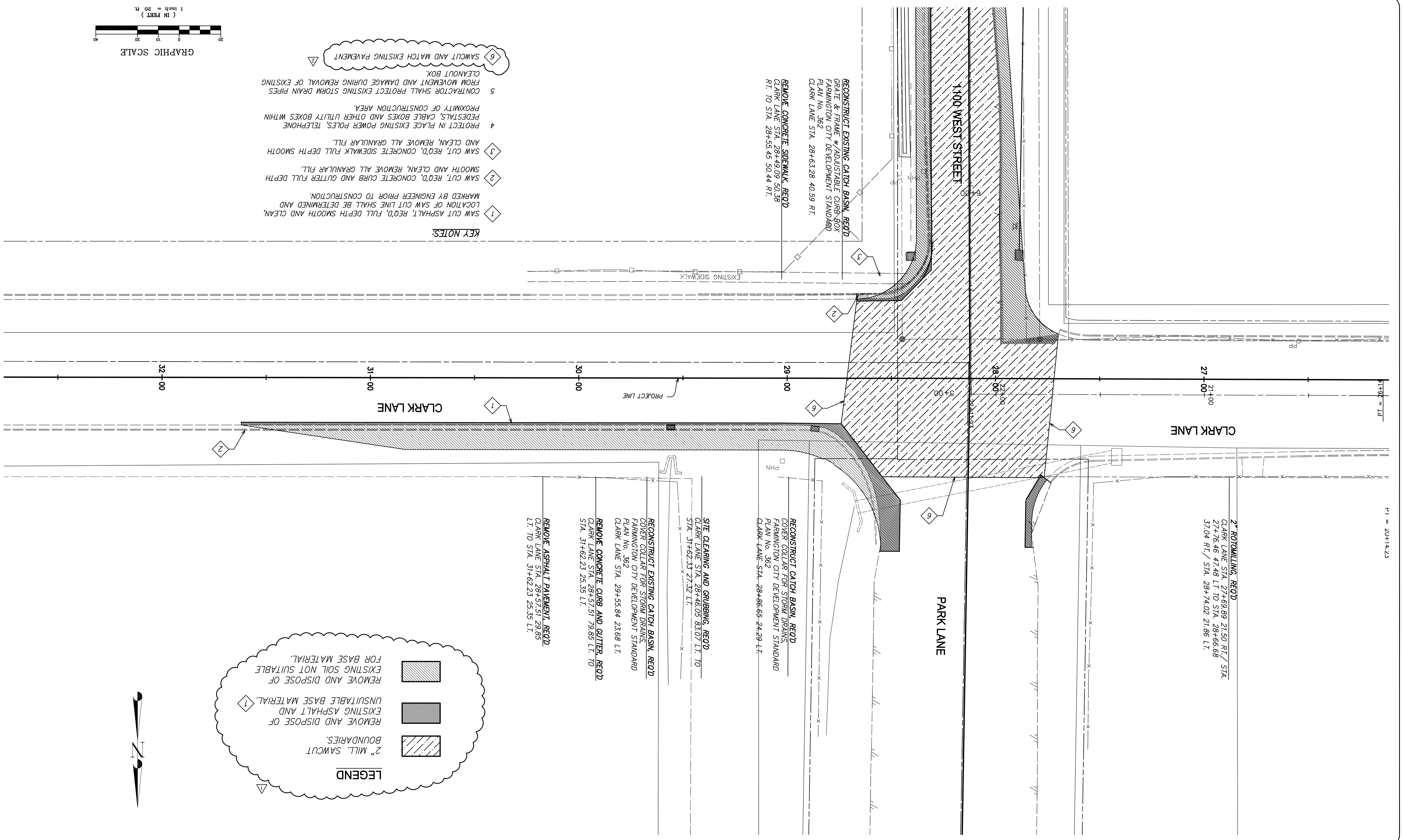
CALDWELL RICHARDS SORENSEN
ANSWERS TO INFRASTRUCTURE



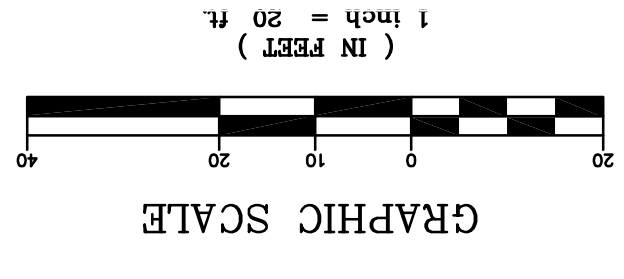
2060 East 2100 South
Salt Lake City, UT 84109
Phone: (801) 359-4272
Fax: (801) 359-4272
www.crsengineers.com

FARMINGTON CITY
CLARK LANE & 1100 WEST INTERSECTION
CLARK LANE EXISTING/REMOVAL
1100 WEST CLARK LANE
FARMINGTON, UTAH



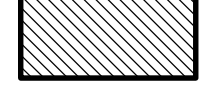
PROJECT NUMBER
05071C.01
RD1
SHEET 7 OF 27



- KEY NOTES:**
- 1 SAW CUT ASPHALT, REQ'D, FULL DEPTH SMOOTH AND CLEAN. LOCATION OF SAW CUT LINE SHALL BE DETERMINED AND MARKED BY ENGINEER PRIOR TO CONSTRUCTION.
 - 2 SAW CUT, REQ'D, CONCRETE CURB AND GUTTER FULL DEPTH SMOOTH AND CLEAN, REMOVE ALL GRANULAR FILL.
 - 3 SAW CUT, REQ'D, CONCRETE SIDEWALK FULL DEPTH SMOOTH AND CLEAN, REMOVE ALL GRANULAR FILL.
 - 4 PROTECT IN PLACE EXISTING POWER POLES, TELEPHONE PEDESTALS, CABLE BOXES AND OTHER UTILITY BOXES WITHIN PROXIMITY OF CONSTRUCTION AREA.
 - 5 CONTRACTOR SHALL PROTECT EXISTING STORM DRAIN PIPES FROM MOVEMENT AND DAMAGE DURING REMOVAL OF EXISTING CLEANOUT BOX.
 - 6 SAWCUT AND MATCH EXISTING PAVEMENT



LEGEND

-  2" MILL. SAWCUT BOUNDARIES.
-  REMOVE AND DISPOSE OF EXISTING ASPHALT AND UNSUITABLE BASE MATERIAL.
-  REMOVE AND DISPOSE OF EXISTING SOIL NOT SUITABLE FOR BASE MATERIAL.

REMOVE ASPHALT PAVEMENT, REQ'D
CLARK LANE STA. 28+57.51 TO 29.85
LT. TO STA. 31+62.23 25.35 LT.

REMOVE CONCRETE CURB AND GUTTER, REQ'D
CLARK LANE STA. 28+57.51 TO 29.85 LT. TO STA. 31+62.23 25.35 LT.

RECONSTRUCT EXISTING CATCH BASIN, REQ'D
COVER COLLAR FOR STORM DRAINS
FARMINGTON CITY DEVELOPMENT STANDARD
PLAN NO. 362
CLARK LANE STA. 29+55.84 23.68 LT.

SITE CLEARING AND GRUBBING, REQ'D
CLARK LANE STA. 28+46.05 83.07 LT. TO STA. 31+62.33 27.32 LT.

RECONSTRUCT CATCH BASIN, REQ'D
COVER COLLAR FOR STORM DRAINS
FARMINGTON CITY DEVELOPMENT STANDARD
PLAN NO. 362
CLARK LANE STA. 28+86.65 24.29 LT.

REMOVE CONCRETE SIDEWALK, REQ'D
CLARK LANE STA. 28+49.09 50.38
RT. TO STA. 28+53.45 50.44 RT.

RECONSTRUCT EXISTING CATCH BASIN, REQ'D
GRATE & FRAME W/ ADJUSTABLE CURB BOX
FARMINGTON CITY DEVELOPMENT STANDARD
PLAN NO. 362
CLARK LANE STA. 28+63.28 40.59 RT.

2' ROTOWALLING, REQ'D
CLARK LANE STA. 27+69.89 21.50 RT./ STA. 27+76.46 47.48 LT TO STA. 28+66.68 37.04 RT./ STA. 28+74.02 21.86 LT.

P1 = 20+14.23