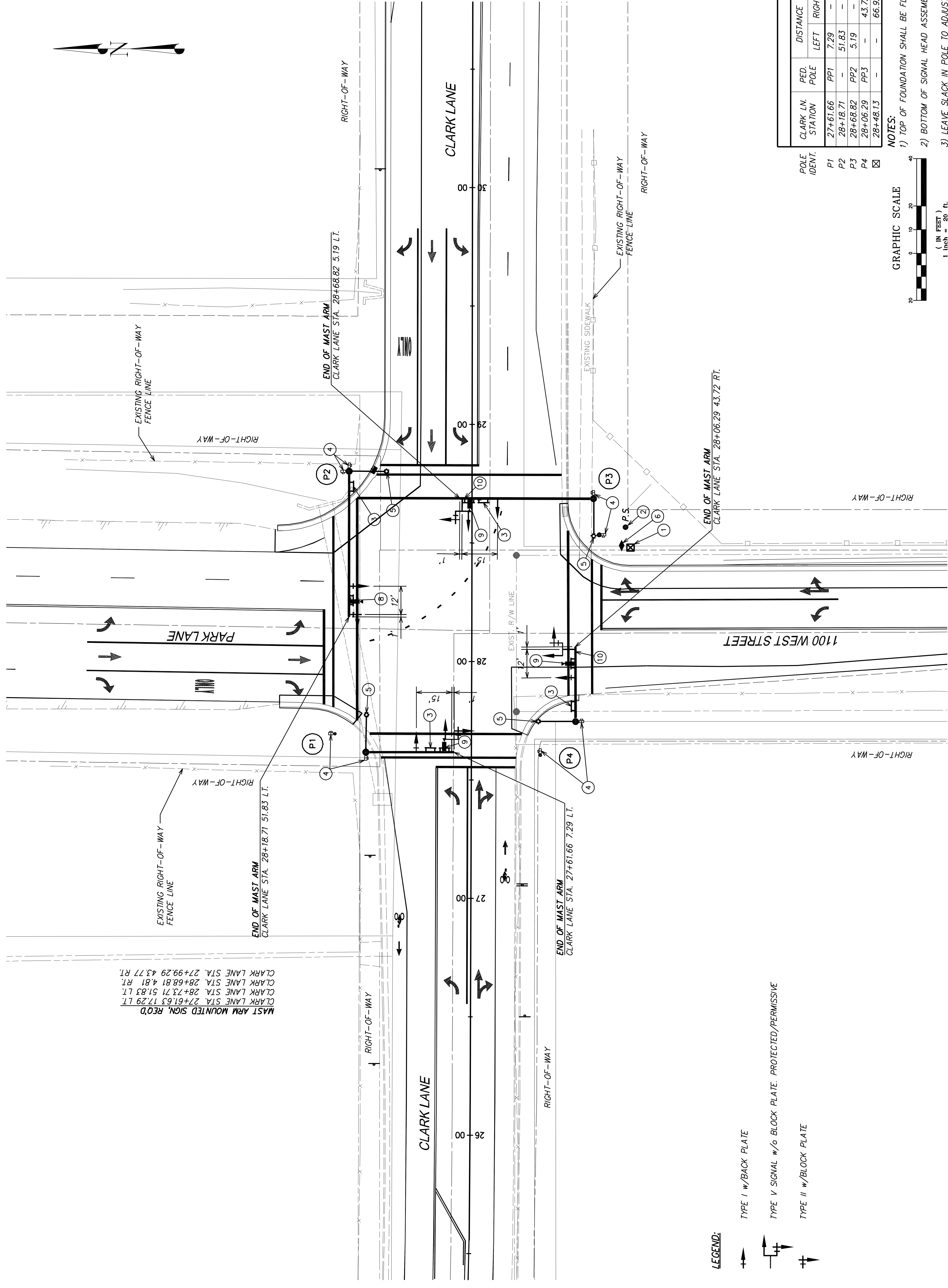
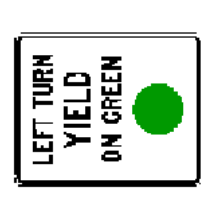


**NOTES:**

- ① TYPE 1 EIGHT PHASE CONTROLLER AND VIDEO DETECTION CONTROLLER WITH A TYPE 1 SIZE 6 CABINET ON A SIZE 6 FOUNDATION NEAR P3, PROVIDED BY FARMINGTON CITY.
- ② POWER SOURCE TO BE LOCATED AT CLARK LANE STA. 28+56.28 64.83' RT. CONTACT GREG SOTTER OF PACIFICORP AT (801) 543-3016 30 DAYS BEFORE POWER IS REQUIRED.
- ③ MAST ARM MOUNTED STREET NAME SIGNS SHALL BE INSTALLED AS SHOWN ON SG-1 ON ALL MAST ARMS.
- ④ PEDESTRIAN SIGNAL MODULES AND PUSH BUTTONS REQUIRED TO CROSS ALL LEGS. PEDESTRIAN SIGNAL MODULES PROVIDED BY FARMINGTON CITY. PUSH BUTTONS PROVIDED BY CONTRACTOR.
- ⑤ CONTRACTOR TO PROVIDE & INSTALL 240 VOLT/400 WATT FULL CUTOFF HIGH PRESSURE SODIUM LUMINAIRE AT P1, P2, P3, AND P4. LUMINAIRES SHALL BE EQUIPPED WITH P.E. RECEPTACLE AND P.E. CONTROL.
- ⑥ UNDERGROUND SERVICE PEDESTAL ON CONCRETE PAD NEAR SIGNAL CONTROLLER AS PER UDOT STANDARDS.
- ⑦ CONTRACTOR IS RESPONSIBLE FOR ENSURING A MINIMUM OF 17.5 FEET AND MAXIMUM OF 19.5 FEET CLEARANCE FROM THE BOTTOM OF THE SIGNAL HEAD BACKPLATE TO THE ROADWAY SERVICE. ADJUST SIGNAL HEAD AND ELEVATION AS NECESSARY.
- ⑧ MAST ARM MOUNTED SIGN, TYPE A-1, 30"x36", REQUIRED, R3-5 INTERSECTION LANE CONTROL.
- ⑨ MAST ARM MOUNTED SIGN, TYPE A-1, 24"x30", REQUIRED, R10-12 LEFT TURN YIELD ON GREEN.
- ⑩ INSTALL CITY FURNISHED PRE-EMPTION SYSTEM.
- ⑪ FOUNDATION ELEVATION TO BE PLACED FLUSH w/ ADJACENT FLAT WORK.



MAST ARM MOUNTED SIGN, REQ'D  
 CLARK LANE STA. 27+61.63 17.29 LT.  
 CLARK LANE STA. 28+73.71 51.83 LT.  
 CLARK LANE STA. 28+68.81 4.81 RT.  
 CLARK LANE STA. 27+99.29 43.77 RT.



**SIGN LEGEND:**

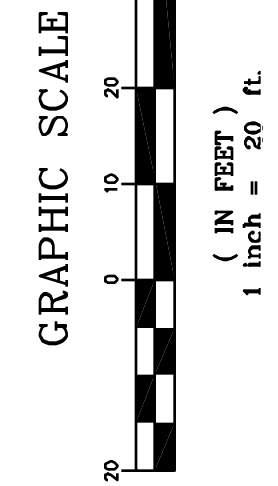
LEFT TURN YIELD ON GREEN

R10-12 LEFT TURN YIELD ON GREEN

R3-5 INTERSECTION LANE CONTROL

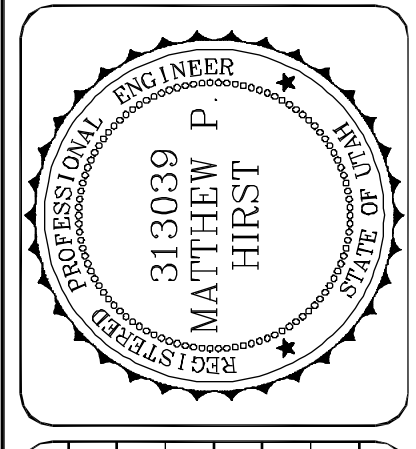
- LEGEND:**
- ➔ TYPE I w/BACK PLATE
  - ➔ TYPE V SIGNAL w/o BLOCK PLATE. PROTECTED/PERMISSIVE
  - ➔ TYPE II w/BLOCK PLATE

POLE IDENT.	CLARK LN. STATION	PED. POLE	DISTANCE		FOUNDATION ELEVATION (FEET)	MAST ARM LENGTH	LUMINAIRE MOUNTING HEIGHT	LUMINAIRE ARM LENGTH	REMARKS
			LEFT	RIGHT					
P1	27+61.66	PP1	7.29	-	4234.66	35	40	15	NEW
P2	28+18.71	-	51.83	-	4236.04	60	40	15	NEW
P3	28+68.82	PP2	5.19	-	4236.19	55	40	15	NEW
P4	28+06.29	PP3	-	43.72	4234.66	30	40	15	NEW
☒	28+48.13	-	-	66.92	-	-	-	-	NEW



- NOTES:**
- 1) TOP OF FOUNDATION SHALL BE FLUSH WITH ADJACENT CONCRETE FLAT WORK.
  - 2) BOTTOM OF SIGNAL HEAD ASSEMBLY SHALL BE 17.5' MINIMUM TO 18.5' MAXIMUM HIGH.
  - 3) LEAVE SLACK IN POLE TO ADJUST HEADS.

REV.	BY	DATE	DESCRIPTION



PRINCIPAL PAUL J. HIRST  
 PROJECT MANAGER MATTHEW P. HIRST  
 CHECKER MATTHEW P. HIRST  
 DRAWN BY PAUL S. HATCH  
 SCALE 1"=20'  
 DATE ISSUED 14. APRIL 2006

**CALDWELL RICHARDS SORENSEN**  
 ANSWERS TO INFRASTRUCTURE™

2060 East 2100 South  
 Salt Lake City, UT 84109  
 Phone: (801) 359-5565  
 Fax: (801) 359-4272  
 www.crsengineers.com

FARMINGTON CITY  
**CLARK LANE & 1100 WEST INTERSECTION**  
 SIGNAL DESIGN  
 SIGNAL PLAN

1100 WEST CLARK LANE  
 FARMINGTON, UTAH

SHEET 12 OF 27  
**SG-2**  
 PROJECT NUMBER 05071C.01