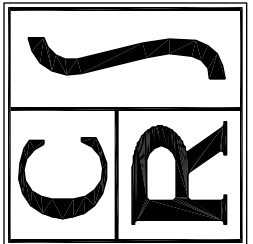


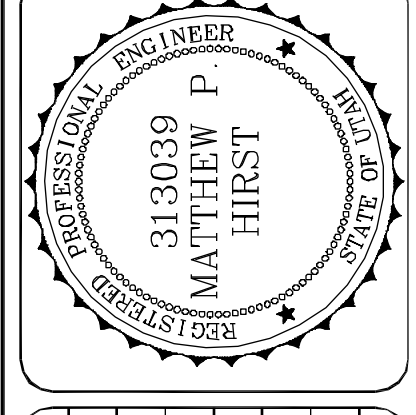
FARMINGTON CITY
CLARK LANE & 1100 WEST INTERSECTION
1100 WEST SIGNING & STRIPING PLAN
 STA. 8+58.45 TO STA. 13+50.00
 1100 WEST CLARK LANE FARMINGTON, UTAH

2060 East 2100 South
 Salt Lake City, UT 84109
 Phone: (801) 359-5565
 Fax: (801) 359-4272
 www.crsengineers.com

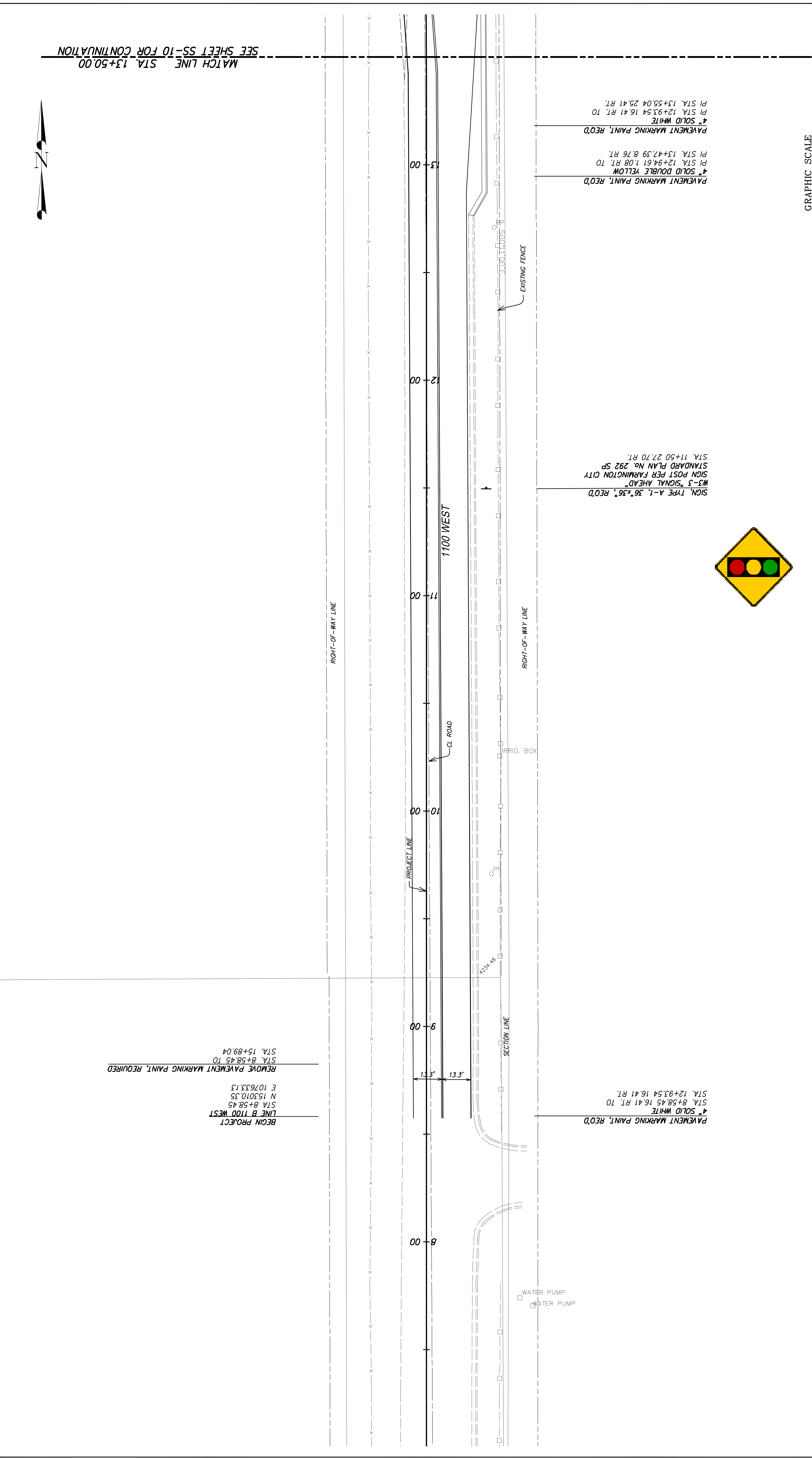
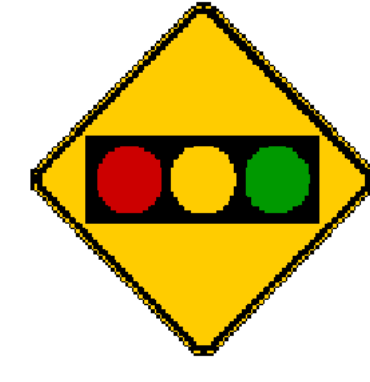
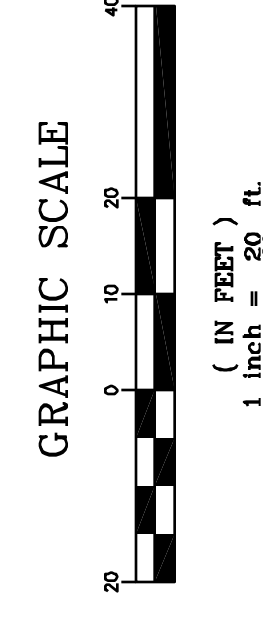
CALDWELL RICHARDS SORENSEN
 ANSWERS TO INFRASTRUCTURE™



PRINCIPAL PAUL J. HIRST
 PROJECT MANAGER MATTHEW P. HIRST
 CHECKER MATTHEW P. HIRST
 DRAWN BY PAUL S. HATCH
 SCALE 1"=20'
 DATE ISSUED 14 APRIL 2006



REV.	BY	DATE	DESCRIPTION



PAVEMENT MARKING PAINT, REOD
 4" SOLID WHITE
 STA. 8+58.45 TO 16.41 RT.
 STA. 12+93.54 TO 16.41 RT.

SIGN, TYPE A-1, 36" x 36", REOD
 W-3 "SIGNAL AHEAD"
 SIGN POST PER FARMINGTON CITY
 STANDARD PLAN NO. 292 SP
 STA. 11+50 TO 27.70 RT.

PAVEMENT MARKING PAINT, REOD
 4" SOLID DOUBLE YELLOW
 PI STA. 13+47.39 TO 8.76 RT.
 PI STA. 12+93.54 TO 16.41 RT.
 PI STA. 13+55.04 TO 25.41 RT.

BEGIN PROJECT
 LINE B 1100 WEST
 STA. 8+58.45
 N 153010.35
 E 107633.13
 REMOVE PAVEMENT MARKING PAINT, REQUIRED
 STA. 8+58.45 TO
 STA. 15+69.04

MATCH LINE STA. 13+50.00
 SEE SHEET SS-10 FOR CONTINUATION

