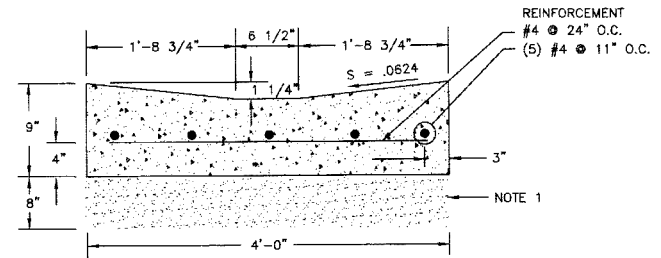


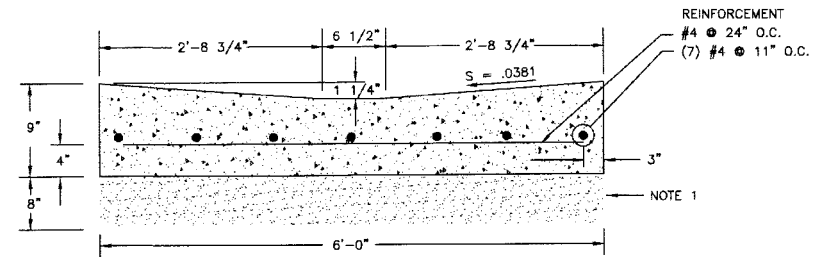
Waterway

1. **UNTREATED BASE COURSE:** Provide material specified in APWA Section 02060. Do not use gravel or sewer rock. Place per APWA Section 02322. Compact per APWA Section 02324 to a modified proctor density of 95-percent or greater. Maximum lift thickness is 8-inches before compaction.
2. **CONCRETE:** Class 4000 per APWA Section 03304. Place per APWA Section 02770. Cure per APWA Section 03390.
 - A. If necessary, provide concrete that achieves design strength in less than 7 days. Use caution, however, as spider cracks develop if air temperature exceeds 90 degrees F.
 - B. Unless shown otherwise, provide 1/2 inch radius on concrete edges exposed to public view
3. **EXPANSION JOINTS:** Full depth 1/2 inch thick type F1 joint filler material per APWA Section 03060. Set top of filler flush with surface of concrete.
4. **CONTRACTION JOINTS:** Make contraction joints vertical, at least 1/8 inch wide, and 2 inches deep or 1/4 slab thickness if the slab is greater than 8 inches thick.
5. **REINFORCEMENT:** ASTM A 615, grade 60, galvanized or epoxy coated deformed steel. See APWA Section 03200 requirements.



CONCRETE AREA = 2.764 SQ. FT.

4'-0" WATERWAY



CONCRETE AREA = 4.16 SQ. FT.

6'-0" WATERWAY

Waterway